

## Identifying CSEC

- ⇒ Overall change in appearance, behavior, or friend group
- ⇒ Change in grades, attendance, or engagement, or an inability to concentrate, extreme exhaustion
- ⇒ In possession of clothing, jewelry, or electronics they cannot afford
- ⇒ Angry, aggressive, or fearful
- ⇒ Withdrawal from friends/family
- ⇒ Gives scripted, defensive, or vague responses
- ⇒ Frequently running away or sneaking out
- ⇒ Uses words like "Daddy," "The Game," "Trick/Date", "Blade," "Wifey"



## How to Report

*If you have knowledge of, or a suspicion that a child may be a victim of CSEC, please contact the 24-hr. **Placer County Child Welfare Hotline***

**1.866.293.1940**

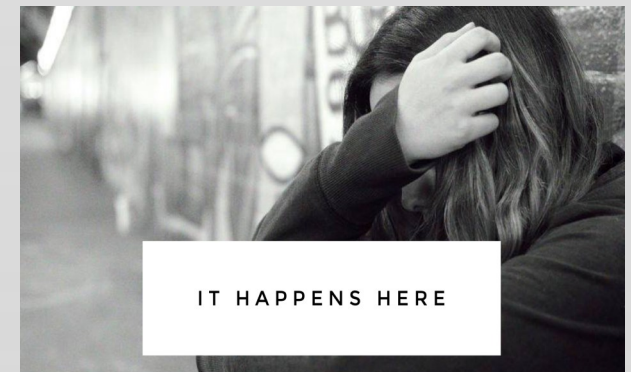
### National Human Trafficking Hotline

Call 1.888.373.7888 or  
text "HELP"  
to BEFREE (233733)



Developed by PCOE on July 15, 2019

# Commercial Sexual Exploitation of Children



# What is CSEC?

The commercial sexual exploitation of children (CSEC) is the sexual abuse or exploitation of a child, for the financial benefit of any person, or in exchange for anything of value, including monetary and non-monetary benefits.

All commercially sexually exploited minors are victims, regardless of the presence of force, fraud, or coercion.

CSEC includes, but is not limited to:



Lloyd, R. & Orman, A. (2010). Training Manual on CSEC: Module 1

**Distributor:** Exploiter/Trafficker

**The demand fuels the supply**

**Supply:** Vulnerable children lured into slavery.

**Demand:** People who purchase sex with children.

# Risk Factors

- ◇ Lack of parental supervision
- ◇ Unsupervised access to the internet
- ◇ History of child abuse
- ◇ Substance use
- ◇ Familial violence or dysfunction
- ◇ Loss of, or separation from caregiver
- ◇ LGBTQ+ youth
- ◇ Unaccompanied or homeless youth
- ◇ Low self-esteem or self-worth
- ◇ Physical or developmental disabilities
- ◇ Low socio-economic status
- ◇ Unstable housing
- ◇ Trauma-related mental health issues
- ◇ Unmet basic needs
- ◇ Undocumented citizenship status
- ◇ Gang association or involvement
- ◇ Involvement with foster care, probation, law enforcement, etc.

PRIOR SEXUAL ABUSE  
FOSTER CARE  
RUNAWAY/HOMELESS

All children are at risk for CSEC; however, exploiters are master manipulators and engage in purposeful and premeditated targeting of vulnerability.

# Pathways of Entry

- ◇ Seduction or coercion
- ◇ Peer recruitment
- ◇ Parents selling their children
- ◇ False advertising for employment, including sales, modeling, or acting
- ◇ Chat rooms and social media
- ◇ Gang-related exploitation
- ◇ Kidnapping, violence and force

# Recruitment

Exploiters oftentimes use the following tactics to recruit, groom, and control victims:

- ◇ Warmth, affection, gifts, intimacy, and compliments
- ◇ Elaborate promises of a better life, fast \$\$\$, and future luxuries
- ◇ Physical and sexual abuse, with intermittent affection
- ◇ Fear, threats, intimidation

